

Corporate Profile

Corporate Profile

Corporate Name	: NIPPON TELEGRAPH AND TELEPHONE EAST CORPORATION
Head Office	: 19-2,Nishi-shinjuku 3-chome, Shinjuku, Tokyo 163-8019, Japan Tel : +81-3-5359-5111
Date of Establishment	: July 1,1999
Business	: Regional telecommunications services ^{*1} in the eastern areas of Japan ^{*2} , business pertaining to these services, business activities to achieve the purpose of the company, business activities to utilize the company's resources
Paid-In Capital	: 335 billion yen
Shareholder	: NIPPON TELEGRAPH AND TELEPHONE CORPORATION(100%)
Total Employees	: 4,950 (NIPPON TELEGRAPH AND TELEPHONE EAST CORPORATION GROUP COMPANY: 35,500) ^{*3}

^{*1} Telephone Services(intra-prefectural communications), Integrated Digital Communications Services(Basic mode, intra-prefectural communications), Leased Circuit Services(intra-prefectural communications),and so on

^{*2} Hokkaido, Aomori, Iwate, Miyagi, Akita, Yamagata, Fukushima, Ibaraki, Tochigi, Gunma, Saitama, Chiba, Tokyo, Kanagawa, Niigata, Yamanashi and Nagano

^{*3} As of March 31, 2023

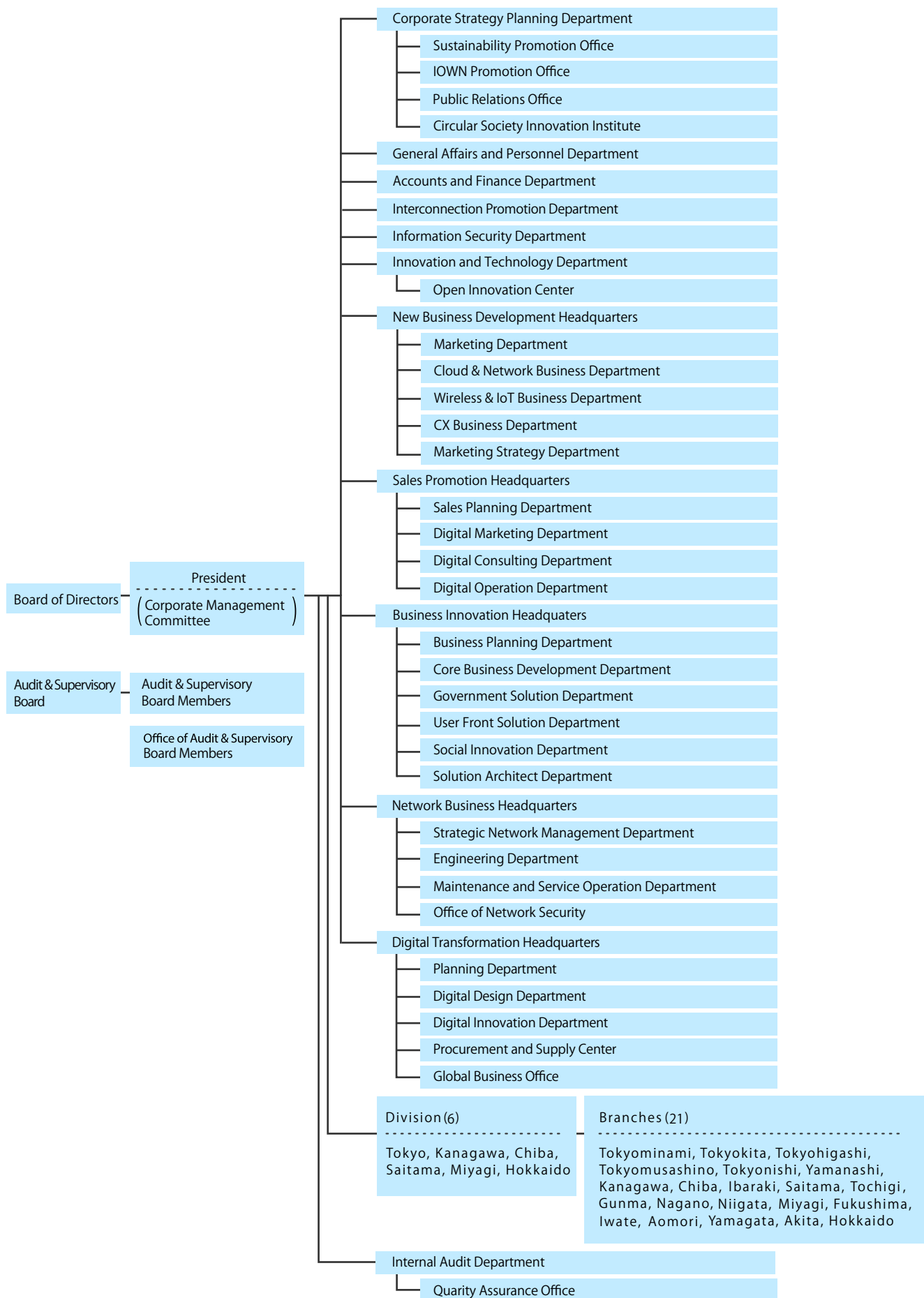
Directors and Auditors

President, Executive Director	: Naoki Shibutani
President, Executive Officer	
Senior Executive Vice President, Representative Director	: Riaki Hoshino
Senior Executive Vice President, Executive Officer	: Toshimasa Kumagai
Senior Vice President, Executive Officer	: Kenichi Yamamoto : Yusaku Shima
Senior Vice President	: Yoshinori Kanehana : Makiko Sekine
Audit & Supervisory Board Member	: Hideo Fujimoto : Tetsuya Kitagawa : Kosuke Nagano
Managing Executive Officer	: Tamaki Endo
Executive Officer	: Machiko Sakai : Takashi Ebihara : Shigeharu Kato : Yasushi Shimazu : Taigo Ichikawa : Takashi Abe : Katsunori Shigehara : Sakiko Kato : Tomoko Aihara : Chinatsu Kataoka : Hirofumi Suto : Akinobu Matsui



(As of April 1, 2024)

Organization Chart



(As Of April 1, 2024)

Non-consolidated Operating Results

(Billions of yen)

	FY2021	FY2022
Operating revenues	1,578.3	1,544.9
Operating expenses	1,314.9	1,307.7
Operating income	263.4	237.3
Recurring profit	278.4	255.6
Income before income taxes	278.4	255.6
Net income	201.0	185.3

Non-consolidated Financial Position

(Billions of yen)

	March 31, 2022	March 31, 2023
Fixed assets	2,834.2	2,850.9
Current assets	594.9	593.5
Total assets	3,429.1	3,444.4
Long-term liabilities	425.6	677.0
Current liabilities	808.9	588.3
Total liabilities	1,234.5	1,265.3
Interest-bearing debt*	138.6	218.0
Shareholder equity	2,194.6	2,179.1
Total liabilities and shareholder equity	3,429.1	3,444.4

* Partial listing only